



**ABI-SHOWATECH**

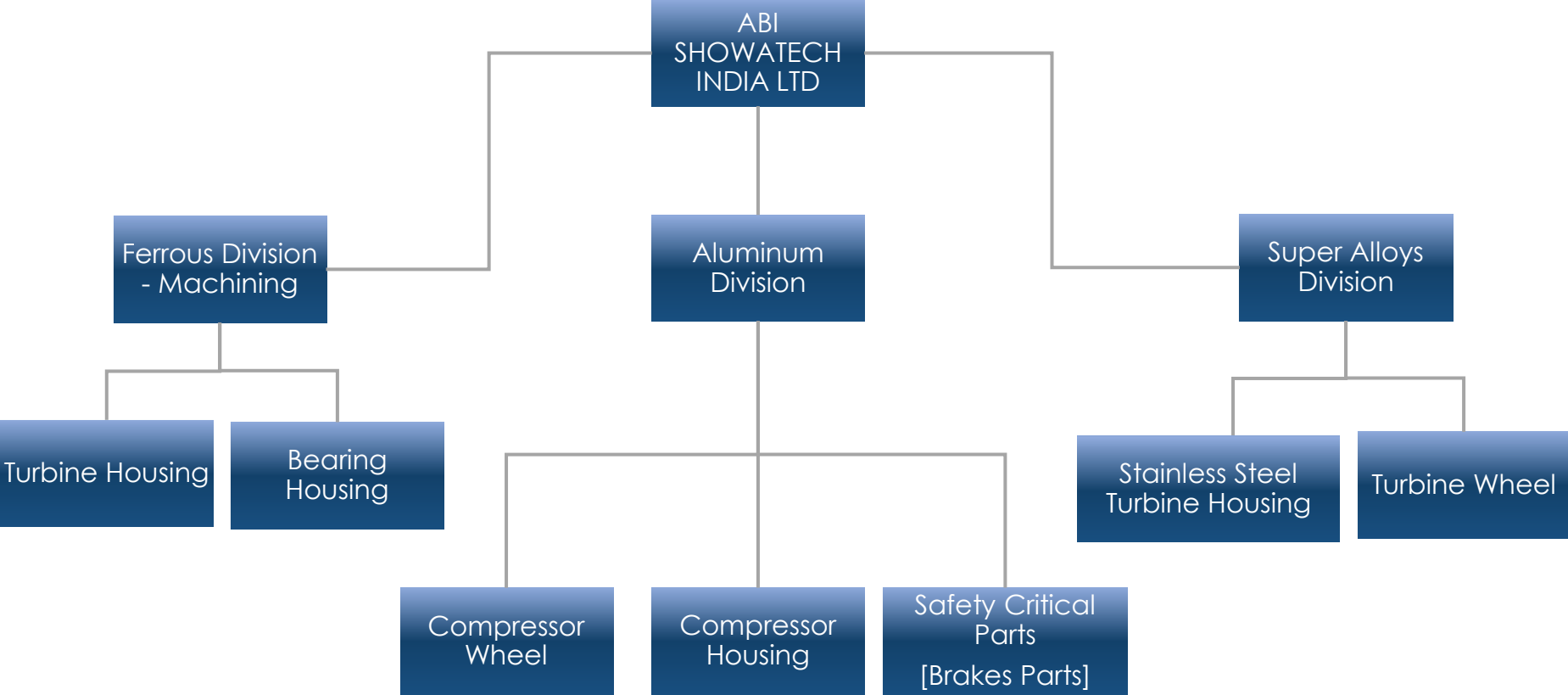
Corporate Overview

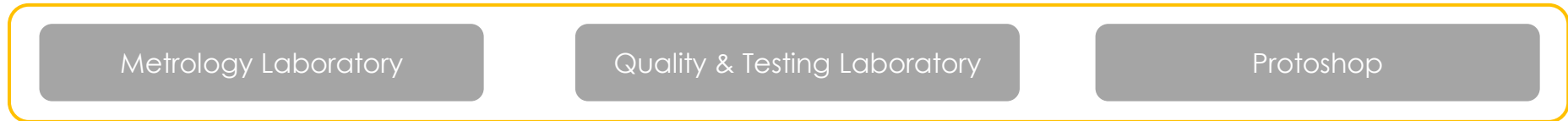
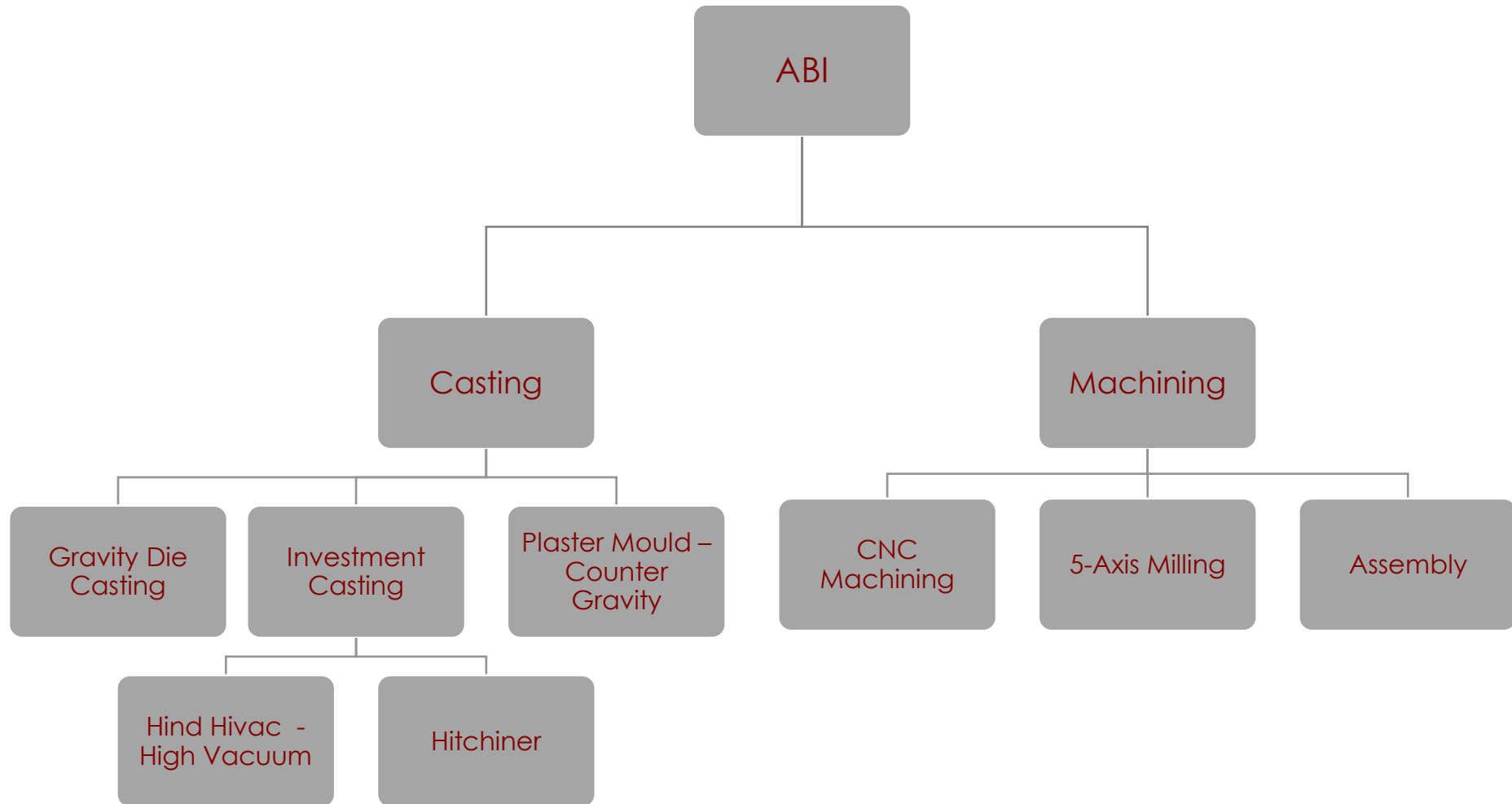
## Overview

# Who we are

- Incorporated in 1991
- Spread across 4 countries (India, China, Oman & USA)
- Houses
  - Casting, machining & Assembly operations
  - State of the art tool making facility
  - Advanced testing laboratories
  - Prototype manufacturing
  - Over 2000 employees
  - Recreational space, canteen, guest houses, hospitals
  - Technical and Grammar Schools
- Sprawling area (over 50 acres with close proximity to Iron Foundry)
- Certification
  - Quality ISO TS 16949:2009
  - EMS ISO 14001:2004
  - Safety BS OHSAS 18001: 2007
  - TPM Excellence

# Business Chart





# Process Highlights...

Process	Key Highlights
Investment Casting – Hitchiner – CLI-C <sup>3</sup>	<ul style="list-style-type: none"><li>• Technical Collaboration with Hitchiner for Manufacturing of Investment parts.</li><li>• Capability to cast different Alloy's [Inco 713C / MAR M246 / GMR]</li><li>• Ability to cast parts with excellent Microstructure</li></ul>
Investment Casting – Hind Hivac	<ul style="list-style-type: none"><li>• Melting and Casting under Vacuum</li><li>• Capability to cast various high temperature alloys</li></ul>
Plaster Mould Process – Counter Gravity	<ul style="list-style-type: none"><li>• Ability to cast thin parts up to 0.3 mm</li><li>• Capability to produce any intricate shape aluminium Alloy casting</li><li>• In-house HIP facility</li></ul>
Gravity Die Casting	<ul style="list-style-type: none"><li>• Internal Tool / Mould manufacturing</li><li>• Capability to melt 60 Tons of Aluminium / day</li><li>• Carousel based gravity pouring</li></ul>

# Process Highlights

Process	Key Highlights
Stainless Steel Foundry	<ul style="list-style-type: none"><li>• Resin bonded Sand process</li><li>• Capability to cast any Air melted material</li><li>• Robotic coating</li><li>• 700 X 700 horizontal core shooting machine</li></ul>
Machining	<ul style="list-style-type: none"><li>• Proven Expertise and capability to Machine high precision and safety critical components</li><li>• Facility and Capability to do 5-Axis Milling</li></ul>
Others	<ul style="list-style-type: none"><li>• Certified to TS 16949, ISO 14001, OSHAS 18001 and TPM.</li><li>• Government recognized R&amp;D center</li><li>• Complete metallurgical, chemical, and testing laboratories at ABI</li></ul>

- **Casting and Machining Facility**
  - Al & Stainless components fully in-house
  - Iron castings from our Group company, machining in-house
- **Safety Critical & Precision parts (Brake parts)**
  - Master Cylinder, Wheel Cylinder, Clutch Boosters, calipers, Pistons
- **Turbo charger parts**
  - Compressor Wheel (cast & milled), Turbine Wheel , Bearing housings, Compressor Housings, Turbine housings Aluminum Parts | Stainless steel parts
- **Housings**
  - Pump Housing, Steering Housing, Radiator Tanks, Gear Housings...



# Production Capacity

Product	Plant Location	Average Volume Per Annum
Master Cylinder	India	2.70 Million
Wheel Cylinder	India	2.90 Million
Caliper	India	0.04 Million
Compressor Wheel	India, USA and China	7.00 Million
Turbine Wheel	India	1.40 Million
Bearing Housing	India and Oman	3.50 Million
Turbine Housing	India	0.60 Million
Compressor Housing	India	1.30 Million
Bearing Cap	India	1.30 Million

Customers

# Customers



## Our Social Commitment

# Community Outreach

- Vidhya Peetam School
  - Established to provide quality education to the children in Sholinghur area
- Matrix Technical Training Institute
  - Set up to impart excellent technical training and education
- Siksha Kendra
  - Training school established to impart knowledge on Turbochargers
- SMF (Sundaram Medical Foundation)
  - Community hospital

Thank You

**Contact Us**

+91- 4172-308441  
abishowatech.co.in  
abimarketing@abishowatech.co.in